



October 2021

Dear RedCLive member,

Welcome to the October 2021 edition of the RED C Live Newsletter!!

Last month, 946 RED C Live members reached the €50 threshold for payment and will be sent payment shortly! The total rewards paid out for completing surveys now stands at €2,670,434.

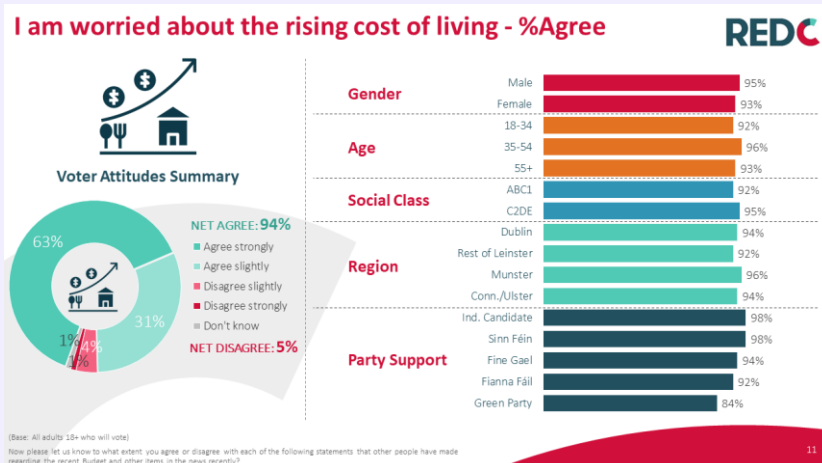
### Payment Methods

For the duration of the Covid-19 crisis, we will be sending out your rewards in digital/virtual card format. This is the quickest way for us to get you rewards at this time. The digital cards will be sent to you by email from RED C, the cards created by EML Payment Group. The cards can be used for any payment that can be made online or over the phone, in exactly the same way as a physical card, but can't be used in store. If you would rather wait for the cheque, please let us know by the 10<sup>th</sup> of the month in which the payment is due and the cheque will be sent as and when we are able to send them.

### Budget Leaves Many Voters Cold

by: Richard Colwell

Instead of garnering support of the electorate for the government parties, the budget appears to have triggered further growth in the popularity for the lead opposition party Sinn Féin. The party surges forward again in today's poll securing 33% of the first preference vote, an increase of 4% support in little over a month. This negative reaction to the budget, appears to be underpinned by a significant concern among voters at the rising cost of living in Ireland, with 94% of those polled agreeing that they are worried about this. ....[MORE](#)



Best Wishes

The RED C Live Team

### FAQ's

#### Logged out of a Survey

Please remember that you can now log back into a survey if you are unable to complete it in one sitting, or if you are logged out due to a technical fault or a server error. We hope this will improve your experience of RedClive. If you are logged out, please wait for at least 15-20 minutes before you attempt to log back in.

#### Quality Control

We would like to remind you that our reputation as a leading market research company is based on the accuracy and validity of the data we provide to our clients.

To ensure members do not complete surveys hurriedly or provide incorrect information, a series of check questions are included at intervals. These inbuilt quality control questions appear on every survey and are administered to everyone equally. Answers provided by members who failed the Quality Control check are not included in the survey results.

We appreciate that this can be frustrating when a genuine mistake is made, however, we are unable to make exceptions to the mechanisms and allow members to go back and change their answers, so please take extra care to avoid being screened out of surveys.

#### Reporting issues with surveys

If you encounter an error or a problem when taking part in a survey, such as the screen freezing or otherwise, please forward us the original survey invite, along with a screen shot of the error, where applicable, to [info@redclive.ie](mailto:info@redclive.ie)